

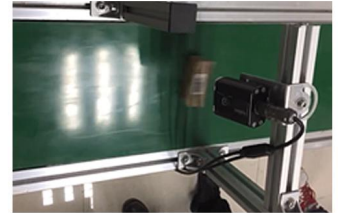
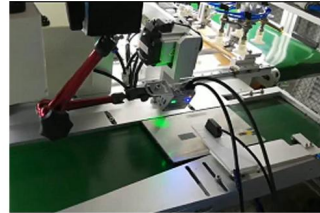
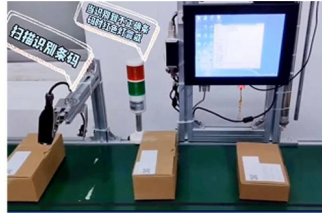
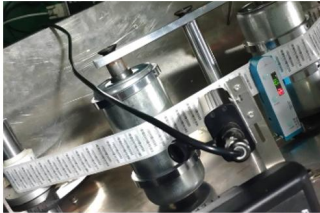
LV3000U Plus (Industrial Level)

Fixed Mount Barcode Scanner

- * IR / light sensor dual trigger mode
- * Excellent 1D/2D barcode reading performance
- * Automatic exposure control
- * Clear laser cross aiming light
- * IP68 protection rating * 3 m anti-drop



Application Scenario



Courier Cabinets, Ticket Checking Machines, Display Kiosks, Various Self-service Cabinet Application Equipment, Etc., Very Suitable for Use in Various Production Lines, Assembly Line Barcodes Detection and Scanning.

Product Features

A. Ir/light Triggers

The Combination of Ir Sensor and Light Sensor Exhibits an Improved Sensitivity in Activating the Scanner to Scan Barcodes As They Are Presented.

C. Automatic Exposure Control(aec)

The Sensors in the Scanner Automatically Adjust the Brightness of Supplementary Lighting Based on the Light Reflected off Barcode.

E. Ip68 Industrial Housing

The Scanner is Sealed to an Ip68 Rating to Prevent Dust, Moisture, Water and Other Contaminant from Entering It.

B. Excellent Reading Performance

Armed with Rakinda High Technology, the Scanner is Capable of Reading 1D As Well As High-volume 2D Barcodes on Paper, Plastic, Pcb or on the Screen Covered with Protective Film.

D. 3m Drop Resistance

The Scanner Withstands Multiple 3m Drops to Concrete (for Six Sides, Three Drops Per Side).

F. Highly Visible Laser Aiming

The Scanner Provides a Laser-generated Crosshair Aiming Pattern That is Clear and Bright Even in Bright Sunlight, Ensuring First Time Accurate Aim.

LV3000U PLUS

Fixed Mount Industrial Barcode Scanner

Performance	Image Sensor	CMOS	Resolution	≥3mil
	Pixel	1280 × 800	Field of View	Horizontal 48.5°, Vertical 30.7°
	Illumination/Aiming	Red LED/Laser Aiming		
	Min.Symbol Contrast	≥25%	Scan Mode	Sense mode,Pulse mode
	Symbologies	2D	PDF417,QR Code,Data Matrix,AZTEC,CSC,Maxicode,Micro QR, Micro PDF417,GM,Code One,etc.	
		1D	EAN-13,EAN-8,UPC-A,UPC-E,Code 128,Code 39,Codabar,UCC/ EAN 128,RSS,ITF,ITF-14,ITF6,Standard 25,Matrix 25,COOP 25, Industrial 25,Plessey,MSI Plessey,Code 11,Code 93,Code 49, Code 16K,etc.	
	Typical Depth of Field	EAN-13 (13mil)	48-390mm	
		Code 39 (5mil)	68-205mm	
		Data Matrix (10mil)	48-190mm	
		QR Code (15mil)	48-290mm	
QR Code (5.6mil)		30-42mm		
DM Code (6.7mil)		25-57mm		
Scan Angle	(pitch)	±50°		
	(tilt)	360°		
	(skew)	±55°		
Mechanical /Electric	Interface	RS-232		
	Trigger Input optocoupler	Maximum 15mA(input power :5V~30V);1 Road		
	Dimensions(mm)	45.5(W)×55.5(D)×28.5(H)		
	Weight	75g		
	Notification	Beep,LED Indicator		
	Operating Voltage	5 V~24VDC		
	Rated Power	White Light:1170mW(Typical) Red Light:2160mW(Typical)		
	Current@5VDC	Operating: White Light:242mA(Typical),266mA(Max.) Red Light: 447mA(Typical),581mA(Max.)		
		Standby: 82mA		